

# License Plate Recognition Camera Quick Start Guide

## Safety Requirements

### Installation Requirements

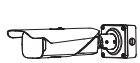
- Comply with all local electrical safety codes and standards when operating the product.
- Check if the power supply is correct before operating the product.
  - Follow the electrical requirements to power the product. Requirements for selecting a power adapter:
    - The power supply must conform to the IEC 60950-1 and IEC 62368-1 standards.
    - The voltage must meet SELV (Safety Extra Low Voltage) requirements and not exceed ES-1 standards.
    - The power supply must meet LPS requirements and not exceed PS2.
  - We recommend using the power adapter provided with the product.
  - The power supply requirements (such as rated voltage) are subject to the product label.
- Do not connect the product to more than two power supplies unless otherwise specified.
- The product must be installed in a location only professionals can access to avoid the risk of non-professionals becoming injured from accessing the area while the product is in operation. Professionals must have full knowledge of the safeguards and risks when using the product.

### Operation Requirements

- Do not open the cover when the product is powered on.
- Do not touch the heat dissipation component of the product.

## Packing List

Check the items below to make sure every installation part is included and in proper condition.



1 x License Plate Recognition Camera



2 x Product Literature



1 x L-Shaped Wrench



1 x T-Handle Allen Wrench



1 x Waterproof Joint



1 x Mounting Plate



1 x Mounting Template



1 x Package of Screws



1 x Package of Mounting Components



1 x Corrugated Pipe



1 x Power Drill (Not Included)



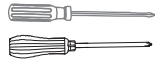
1 x Pole Mount Bracket (Not Included)



1 x Roll of Electrical Tape (Not Included)



1 x MicroSD Card (Not Included)



1 x Slotted Screwdriver & 1 x Phillips Head Screwdriver (Not Included)

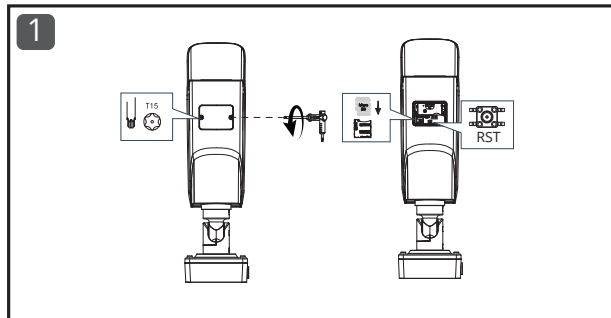
## Device Initialization

- 1 Enter the camera's IP address in the browser address bar. Chrome and Firefox are recommended.
- 2 Follow the on-screen instructions to complete the initialization process.

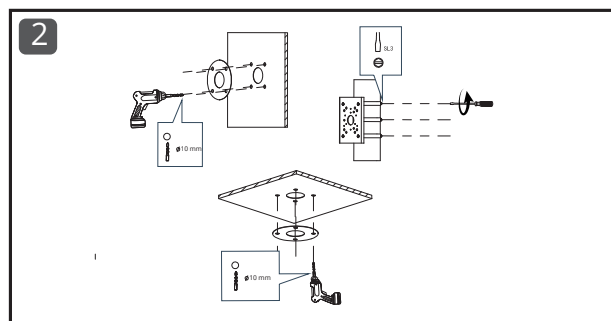
The image shows a web browser window titled "Device Initialization". It contains a form with the following fields: Username (pre-filled with "admin"), Password, Confirm Password, and Email Address. Below the Password field, there is a note: "The password must consist of 8 to 32 non-blank characters and contain at least two types of characters among upper case, lower case, number, and special character (excluding ' ' and '&')." There is a checkbox next to the Email Address field with the text "For password reset. Recommended or improved in time." At the bottom of the form is an "OK" button.

## Installation Steps

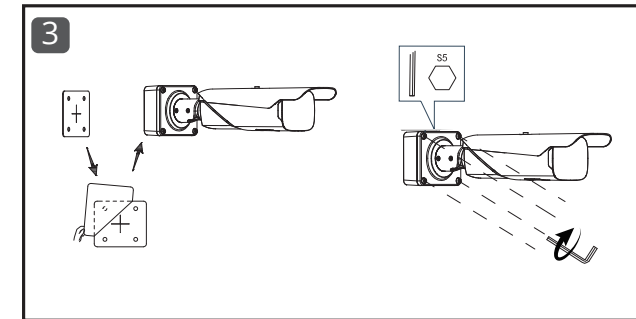
Remove the cover on top of the camera with the T-handle Allen wrench and insert your MicroSD card.



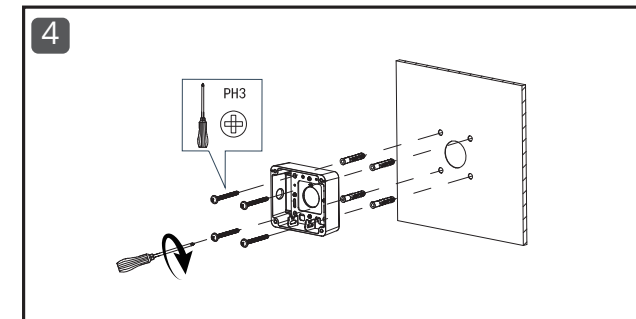
For a wall or ceiling mount, use the supplied mounting template to position and drill the installation holes. For a pole mount, install at the desired height and in the correct direction.



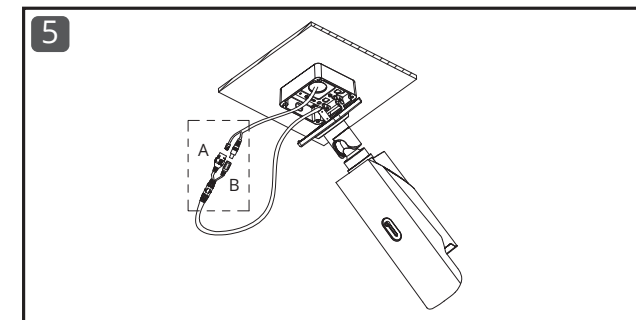
Remove the mounting plate's protective film. Secure the mounting plate onto the camera.



Install the mounting plate and camera (camera not pictured in diagram) onto the desired location.

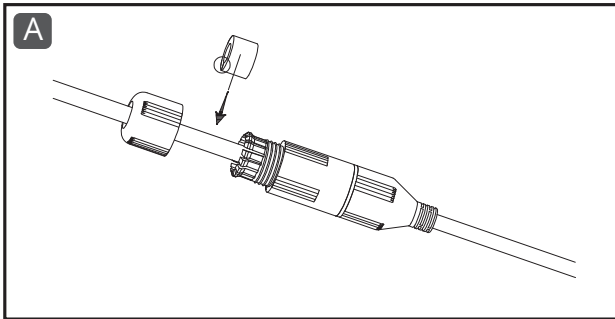


Pull each wire through the cable opening and connect. Next, resecure the mounting plate. See optional procedures A and B to create a more secure attachment for these components.

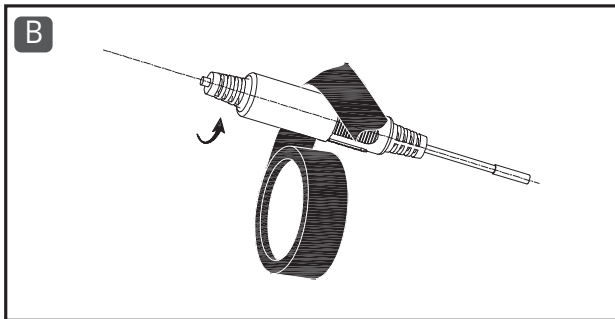


# License Plate Recognition Camera Quick Start Guide

Install a protective cover on the cap of the PoE connector before connecting the two wires.



Wrap the camera's power cable with electrical tape to ensure a secure connection and protect it from water.



Position and secure the camera at the desired angle. The camera can be moved up and down and rotated. Use the T15 screws to set the camera at an angle or use the S5 screws to set the camera straight vertically or horizontally.

